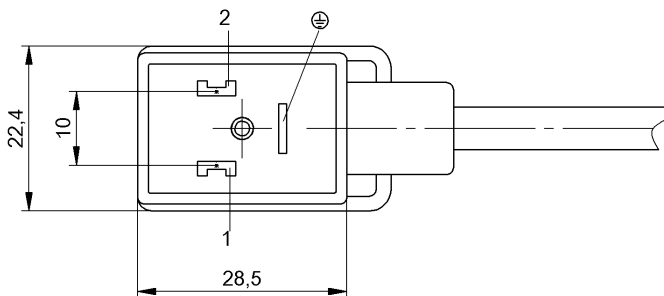
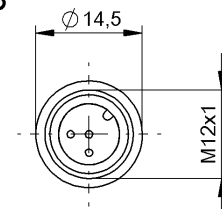


A



B



### Basic features

Approval/Conformity	CE WEEE
---------------------	------------

### Electrical connection

Bending radius min., fixed cable	5 x D
Bending radius min., flexible cable	10 x D
Cable	PUR black, 5 m, drag chain compatible
Cable diameter D	4.60 mm ±0.20 mm
Cable, bending cycles min.	2 mil.
Conductor cross-section	0.50 mm <sup>2</sup>
Connection 1	B, DIN-0°-Valve connector, angled, 3-pin
Connection 2	M12x1-Male, straight, 3-pin, A-coded
Number of conductors	3
System	Molded/Molded

### Electrical data

Operating voltage U <sub>b</sub>	24 VDC / 24 VAC
Rated current (40 °C)	4.0 A
Suppressor	Suppressor diode

### Environmental conditions

Cable temperature, drag chain	-25...60 °C
Cable temperature, fixed routing	-50...80 °C
Cable temperature, flexible routing	-25...80 °C
IP rating	IP67/IP67, IP69K

### Material

Cable jacket, material	PUR
Material contact carrier	PBT/TPU
Material contacts	Brass/Bronze
Material cover nut	Brass nickel-plated
Material grip	PUR/PUR
Material locking screw	Steel

Double-Ended Cordsets  
**BCC VB03-M413-3E-666-PX0350-050**  
**Order Code: BCC064M**



**Mechanical data**

<p><b>Acceleration max., drag chain</b> 5 m/s<sup>2</sup></p> <p><b>Cable jacket, color</b> black</p> <p><b>Cable length L</b> 5.00 m</p> <p><b>Cable properties</b> drag chain compatible</p>	<p><b>Horizontal travel permitted, drag chain</b> 5 m</p> <p><b>Tightening torque pigtail</b> 0.5 Nm/0.6 Nm</p> <p><b>Traverse speed max., drag chain</b> 200 m/min</p> <p><b>Vertical travel permitted, drag chain</b> 2 m</p>
--	---

**Remarks**

Cable construction acc. to UL-AWM Style 20549  
 Halogen-free acc. to EN 50267-2-1  
 Silicone-free  
 Flame resistance per IEC 60332-2-2  
 \* style B per EN 175301-803  
 Enclosure rating per IEC 60529 or 20653, only in screwed state with the associated mating piece.

**Connector Drawings**



- |  |  |
|--|--|
| <p><b>I</b></p> <p>PIN 1: brown</p> <p>PIN 2: blue</p> <p>PIN PE: green/yellow</p> | <p><b>II</b></p> <p>PIN 3: blue</p> <p>PIN 4: brown</p> <p>PIN 5: green/yellow</p> |
|--|--|

**Wiring Diagrams**

